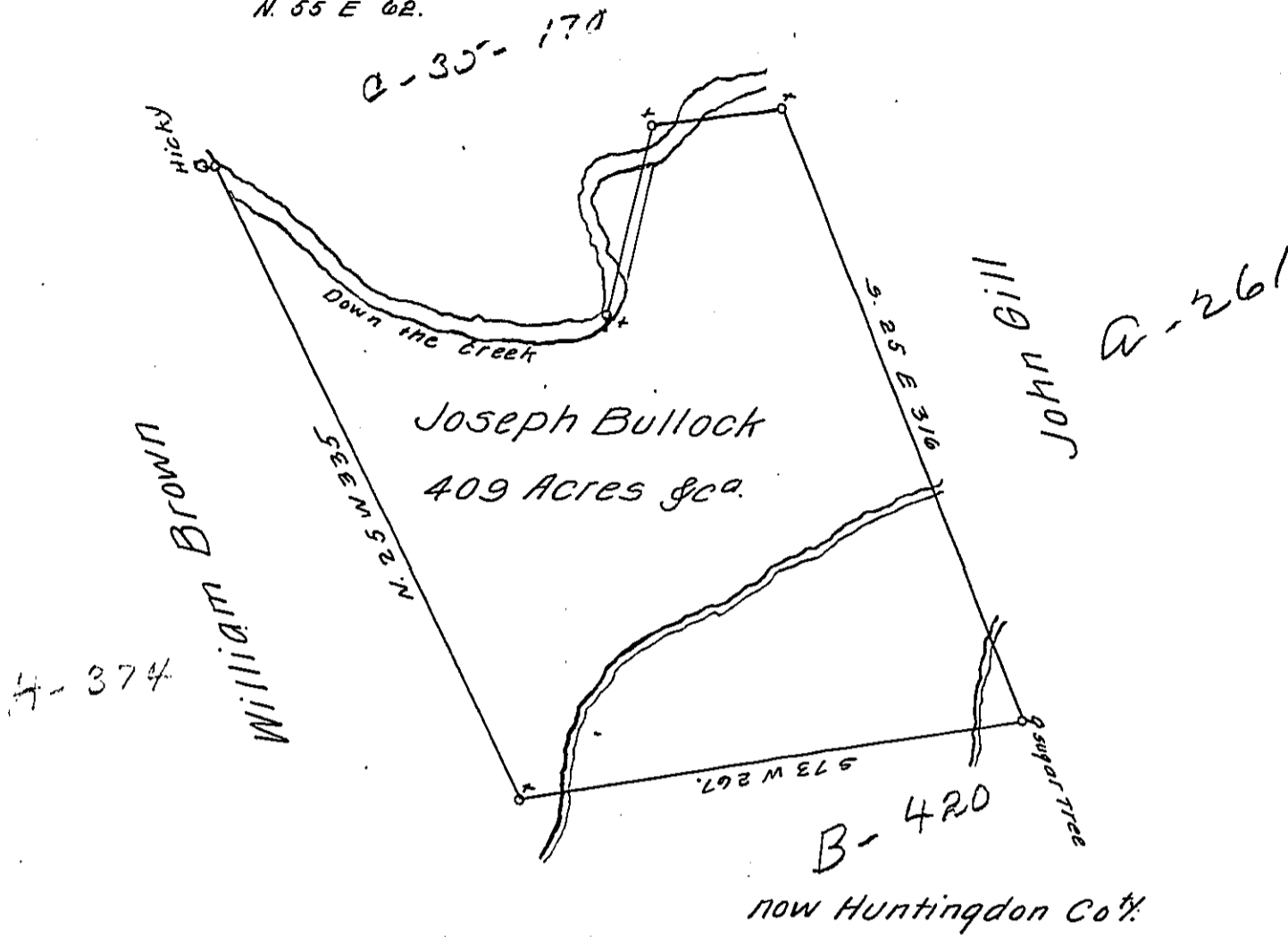


Courses down the Creek

- S. 52 E 96.
- S. 70 E 53
- N. 88 E 60.
- N. 16 E 105.
- N. 55 E 62.



Draught of a Tract of Land situate on Clear Field Creek in the County of Bedford Containing four hundred and Nine Acres & the Usual Allowance of Six Per Cent for Roads &c. Surveyed for Joseph Bullock 3^d Day of November 1784. In Pursuance of a Warrant Dated 1st July 1784.

George Woods

To John Lukens Esq^r S.G.

D.S.

IN TESTIMONY that the above is a copy of the original remaining on file in the Department of Internal Affairs of Pennsylvania, made conformably to an Act of Assembly approved the 16th day of February, 1833, I have hereunto set my Hand and caused the Seal of said Department to be affixed at Harrisburg, this first day of August 1911.

Henry Howell
Secretary of Internal Affairs.